

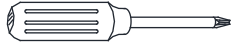
RHBABY&CHILD

JEUNE FRENCH CONTEMPORARY BOOKCASE – ASSEMBLY INSTRUCTIONS

PARTS INCLUDED

A [1] BOOKCASE

TOOLS NEEDED



PHILLIPS-HEAD SCREWDRIVER (NOT INCLUDED)

ANTI-TIPPING RESTRAINT:

YOUNG CHILDREN MAY BE INJURED BY TIPPING FURNITURE. THE USE OF AN ANTI-TIPPING RESTRAINT IS HIGHLY RECOMMENDED. WHEN PROPERLY INSTALLED, THIS RESTRAINT CAN PROVIDE PROTECTION AGAINST THE UNEXPECTED TIPPING OF FURNITURE DUE TO SMALL TREMORS, BUMPS OR CLIMBING. **WE RECOMMEND ATTACHMENT TO A WALL STUD WHEN POSSIBLE, OR INSTALLATION BY A PROFESSIONAL WHEN ATTACHING THE ANTI-TIP KIT TO MASONRY OR A CONCRETE WALL.**

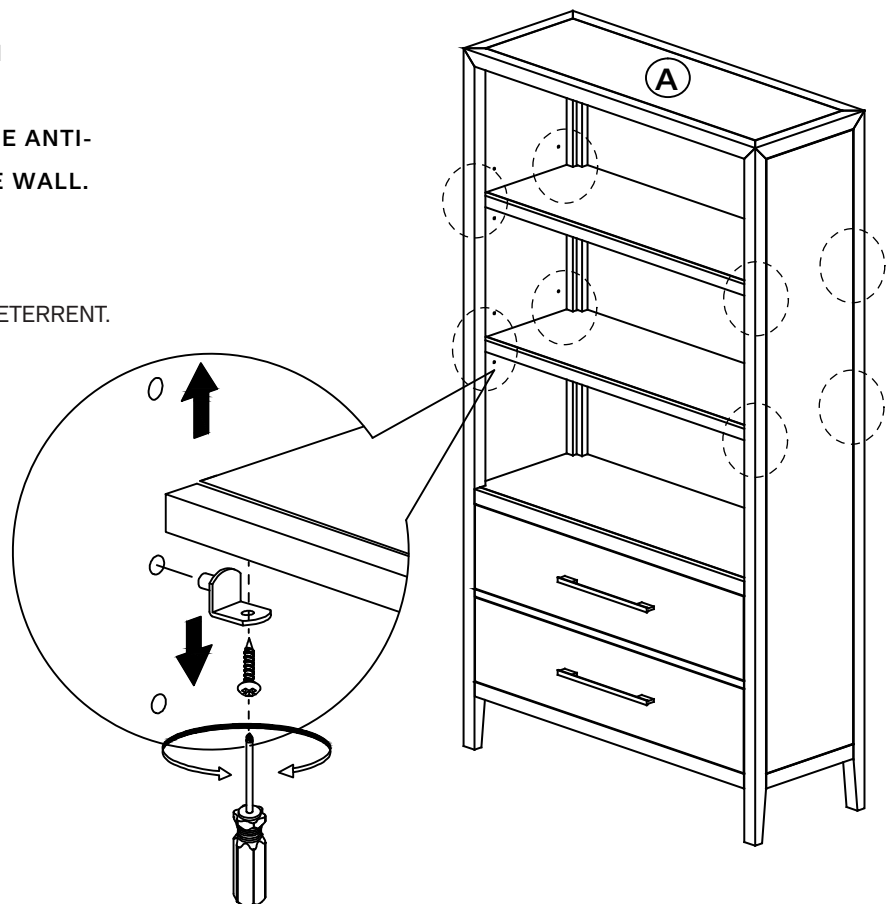
WARNING:

THE ANTI-TIPPING RESTRAINT IS ONLY A DETERRENT. IT IS NOT A SUBSTITUTE FOR PROPER ADULT SUPERVISION.

ASSEMBLY INSTRUCTIONS:

NOTE: REMOVE THE SCREWS FROM THE SHELF CLIPS TO ADJUST THE PLACEMENT OF WOODEN SHELVES

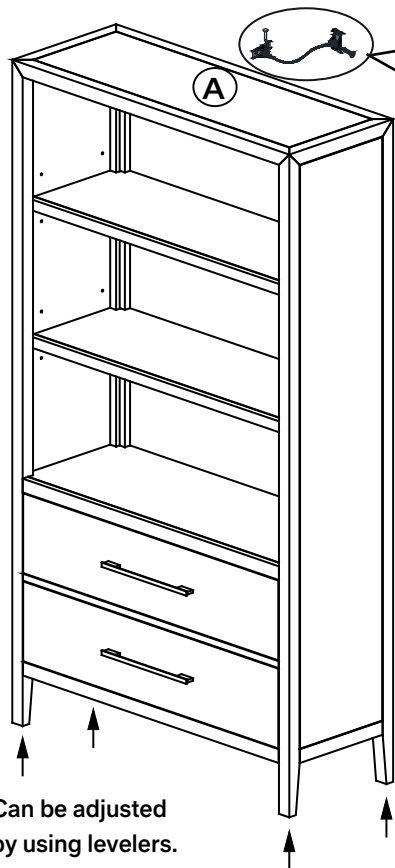
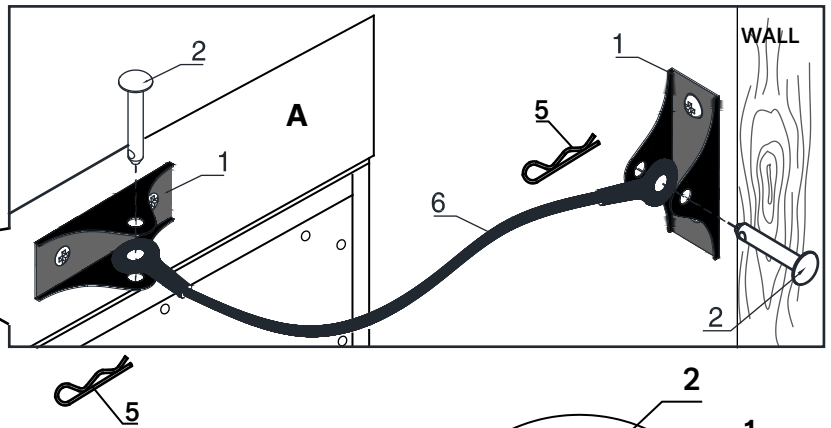
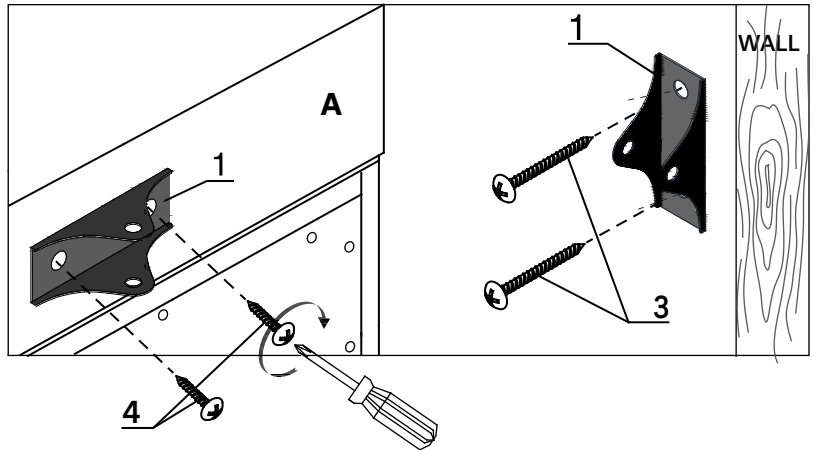
NO.	ITEM	DESCRIPTION	QTY.
1		Metal Bracket	2 pcs.
2		Clevis Pin	2 pcs.
3		Long Screws 8 x 37mm	2 pcs.
4		Short Screws 8 x 16mm	2 pcs.
5		Hair Pin	2 pcs.
6		Galvanized Steel Cable 1.6 x 162mm	1 pc.



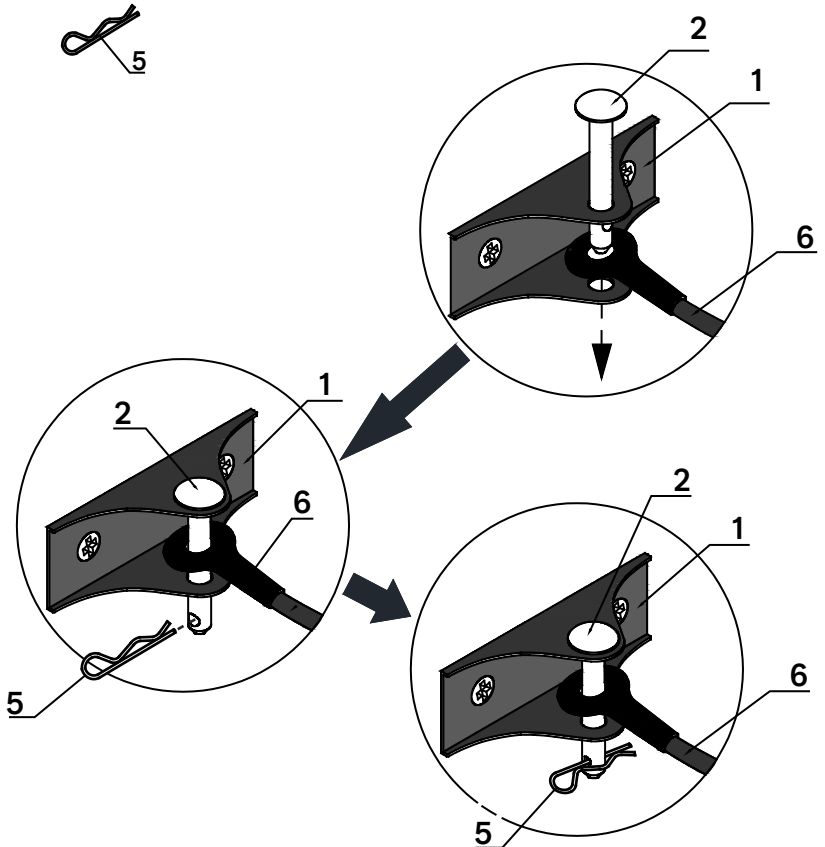
RHBABY&CHILD

JEUNE FRENCH CONTEMPORARY BOOKCASE – ASSEMBLY INSTRUCTIONS

1. ATTACH ONE METAL BRACKET (1) TO THE BOOKCASE (A) AND THE OTHER TO THE WALL USING THE SCREWS PROVIDED (3, 4).
2. PLACE EACH END OF THE STEEL CABLE (6) INSIDE THE MIDDLE OF EACH METAL BRACKET AND SLIDE THE CLEVIS PIN (2) THROUGH THE HOLES IN THE METAL BRACKET AND STEEL CABLE HEAD.
3. THEN INSERT HAIR PIN (5) INTO THE HOLE IN THE CLEVIS PINS (2).
4. USE THE ADJUSTABLE LEVELERS WHEN THE BOOKCASE IS PLACED ON AN UNEVEN FLOOR.



Can be adjusted by using levelers.



CARE INSTRUCTIONS:

1. DUST OFTEN USING A CLEAN, SOFT, DRY AND LINT-FREE CLOTH.
2. BLOT SPILLS IMMEDIATELY AND WIPE WITH A CLEAN, DAMP CLOTH.
3. DO NOT USE CHEMICAL CLEANERS, ABRASIVES, OR FURNITURE POLISH ON THE LACQUERED FINISH.